

MILL END (APARTMENT 2)

Accommodation Information



ABC BOAT HIRE

Directions To The Marina

By Road

- Leave M6 Motorway at junction 16. Follow signs to Crewe / Nantwich.
- At the first roundabout straight on signed Nantwich /Chester.
- Carry straight on through 3 more roundabouts. After the third you will come to some traffic lights turn left A525.
- Straight through the next set off lights.
- Turn right at the next set signed Whitchurch A525.
- Take the second turning on your left signed Whitchurch. You go past a lake on you right hand side.
- About another 3miles you will enter the small village of Aston. TURN RIGHT to Wrenbury.
- Follow signs. 2 Miles you will come to the end of the road facing you is a school.
- Turn left keep going 3/4 mile you will come to a lift bridge go over the bridge the Marina is on the right

By Rail & Airports

From the London Airports: Make your way either by the London Underground airport shuttle bus or taxi to Euston Main Line rail terminal in central London

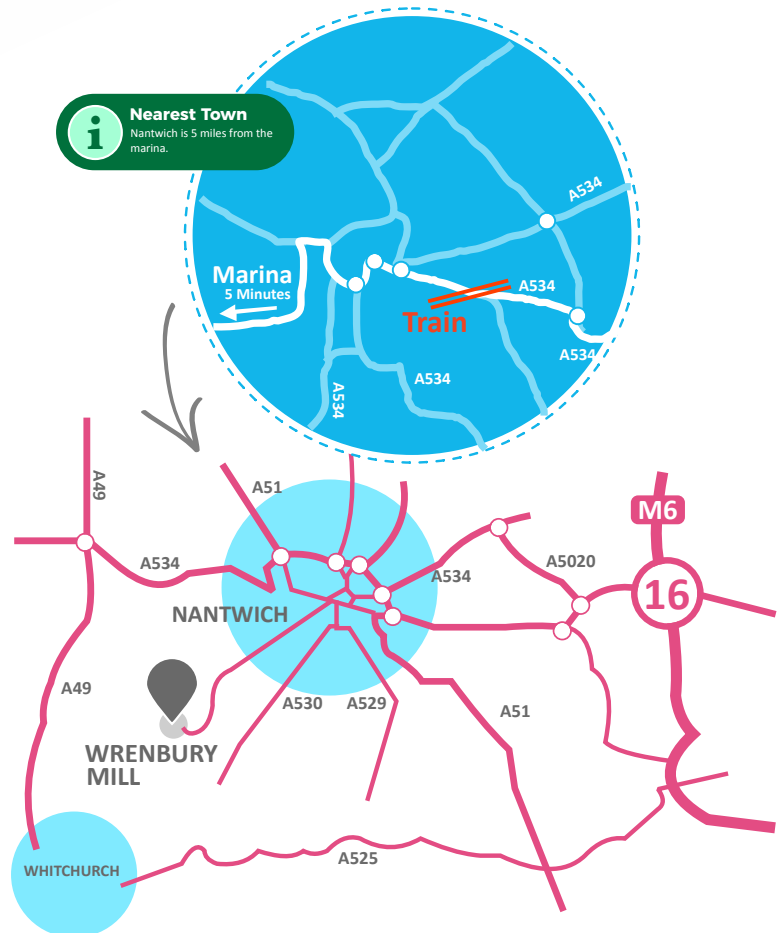
Board the Inter-City Express to Crewe (trains depart frequently for the North West, journey time is approximately 2 hours), then travel by taxi to Wrenbury. **From Manchester International Airport:** Take the airport bus to Manchester Piccadilly station which leaves every half an hour.

At the station board a train for Crewe. At Crewe take a taxi from outside the station to Wrenbury marina (see address below). Please contact the taxi company for an estimate.



You can buy rail tickets online at thetrainline.com or gwr.com

What 3 Words ///appeal.samplers.fuzz



TRAVEL & PLANNING

LOCAL ACCOMMODATION

Please check www.airbnb.co.uk or www.laterooms.com for local availability.

LOCAL TAXI COMPANIES

A2B Taxi 07859042690

Haighton's Taxis 01270 624 574

NEAREST GROCERY STORES

There is a local shop to Wrenbury, but the closest larger supermarkets are **Morrisons** (01270 627426) and **Sainsburys** (01270 629664) in Nantwich.

FOR MORE INFORMATION ON WHATS NEARBY...

Visit our website - wrenburymill.com/nearby

ADDRESS: Wrenbury Mill, Nr Nantwich, Cheshire, CW5 8HG PHONE: 01270 780544

E-MAIL: abclg@wrenburymill.com WEB: www.wrenburymill.com

V.2023

Mill End - Wrenbury Mill

Situated on the Llangollen Canal in North Wales, this apartment gives you a base to explore the beautiful canals and surrounding countryside.

Quick Info



- **2 Bedrooms** (2 people in each room)
- **Full kitchen facilities**
- **Bathroom with shower**
- **TV with Freeview**
- **Heating throughout**
- **Free Wi-Fi available**
- **Pets allowed**

25% off day boat hire when you book this apartment.

Mill End is a two stylish 2 bedroom apartments located in the lovely Cheshire countryside. The holiday apartments are on the first floor of the Wrenbury Mill building, with beautiful views of passing boats in one direction and a traditional country pub the other.

The accommodation consists of a lounge with dining area, a modern fully equipped kitchen, 2 spacious bedrooms that can be configured as a double or 2 singles and a bathroom with shower. It is well located, with many attractions nearby including Beeston castle, Cheshire ice cream farm, Hack Green secret Nuclear Bunker and Cholmondeley Castle Gardens.

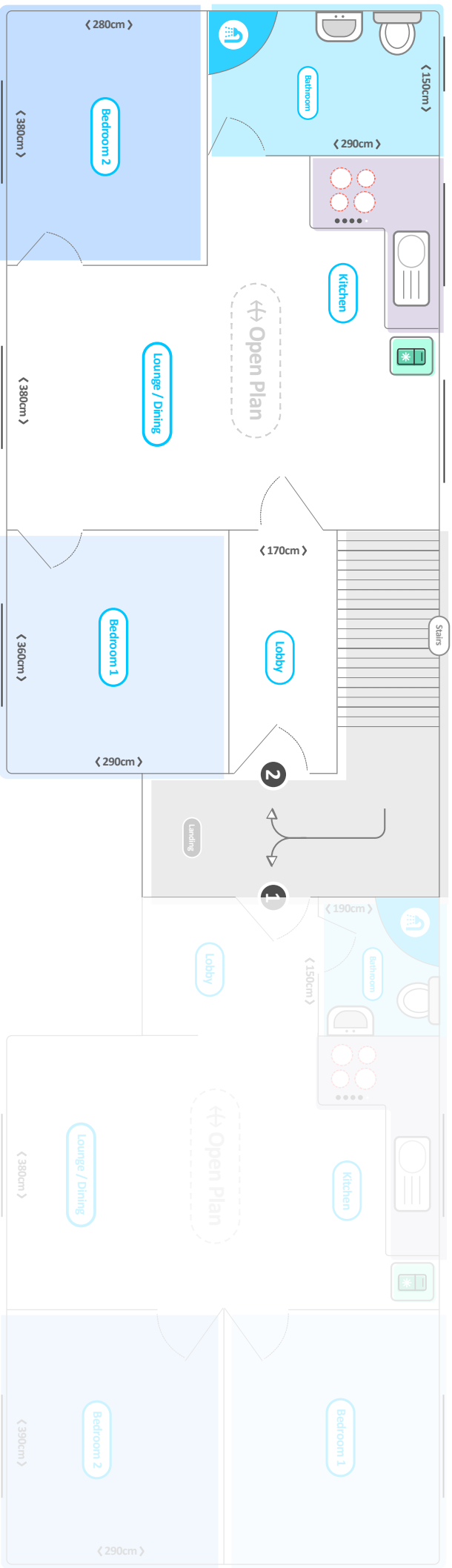
If you book any of these apartments, you'll be entitled to 25% discount off our Day Hire at Whitchurch Marina (30 min drive away).

Call Us: 01270 780 544 - Go Online: wrenburymillapartment.com



FLOOR PLANS

Mill End



THE GRAIN STORE (APARTMENT 1)



ABC BOAT HIRE

Accommodation Information

Directions To The Marina

By Road

- Leave M6 Motorway at junction 16. Follow signs to Crewe / Nantwich.
- At the first roundabout straight on signed Nantwich /Chester.
- Carry straight on through 3 more roundabouts. After the third you will come to some traffic lights turn left A525.
- Straight through the next set off lights.
- Turn right at the next set signed Whitchurch A525.
- Take the second turning on your left signed Whitchurch. You go past a lake on you right hand side.
- About another 3miles you will enter the small village of Aston. TURN RIGHT to Wrenbury.
- Follow signs. 2 Miles you will come to the end of the road facing you is a school.
- Turn left keep going 3/4 mile you will come to a lift bridge over the bridge the Marina is on the right

By Rail & Airports

From the London Airports: Make your way either by the London Underground airport shuttle bus or taxi to Euston Main Line rail terminal in central London

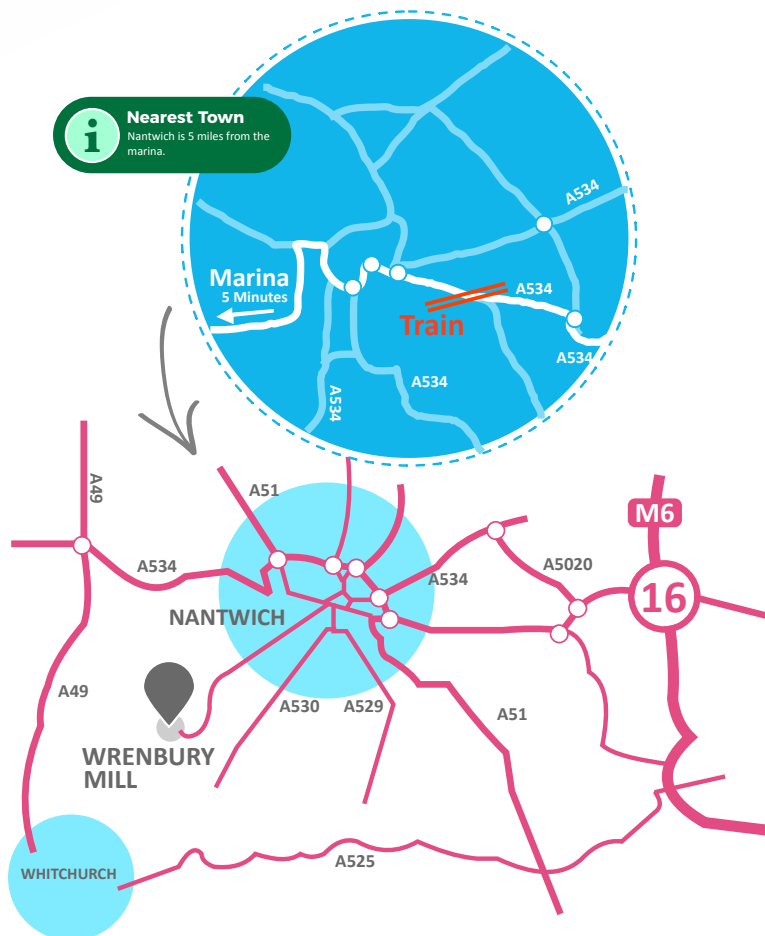
Board the Inter-City Express to Crewe (trains depart frequently for the North West, journey time is approximately 2 hours), then travel by taxi to Wrenbury. **From Manchester International Airport:** Take the airport bus to Manchester Piccadilly station which leaves every half an hour.

At the station board a train for Crewe. At Crewe take a taxi from outside the station to Wrenbury marina (see address below). Please contact the taxi company for an estimate.



You can buy rail tickets online at thetrainline.com or gwr.com

What 3 Words ///appeal.samplers.fuzz



TRAVEL & PLANNING

LOCAL ACCOMMODATION

Please check www.airbnb.co.uk or www.laterooms.com for local availability.

LOCAL TAXI COMPANIES

A2B Taxi 07859042690

Haighton's Taxis 01270 624 574

NEAREST GROCERY STORES

There is a local shop to Wrenbury, but the closest larger supermarkets are **Morrisons** (01270 627426) and **Sainsburys** (01270 629664) in Nantwich.

FOR MORE INFORMATION ON WHATS NEARBY...

Visit our website - wrenburymill.com/nearby

ADDRESS: Wrenbury Mill, Nr Nantwich, Cheshire, CW5 8HG PHONE: 01270 780544

E-MAIL: abclg@wrenburymill.com WEB: www.wrenburymill.com

V.2023

The Grain Store - Wrenbury Mill

Situated on the Llangollen Canal in North Wales, this apartment gives you a base to explore the beautiful canals and surrounding countryside.

Quick Info



- **2 Bedrooms** (2 people in each room)
- **Full kitchen facilities**
- **Bathroom with shower**
- **TV with Freeview**
- **Heating throughout**
- **Free Wi-Fi available**
- **Pets allowed**

25% off day boat hire when you book this apartment.

The Grain Store is a two stylish 2 bedroom apartments located in the lovely Cheshire countryside. The holiday apartments are on the first floor of the Wrenbury Mill building, with beautiful views of passing boats in one direction and a traditional country pub the other.

The accommodation consists of a lounge with dining area, a modern fully equipped kitchen, 2 spacious bedrooms that can be configured as a double or 2 singles and a bathroom with shower. It is well located, with many attractions nearby including Beeston castle, Cheshire ice cream farm, Hack Green secret Nuclear Bunker and Cholmondeley Castle Gardens.

If you book any of these apartments, you'll be entitled to 25% discount off our Day Hire at Whitchurch Marina (30 min drive away).

Call Us: 01270 780 544 - Go Online: wrenburymillapartment.com



FLOOR PLANS

