

# THE BIKE SHED

## Accommodation Information



### DIRECTIONS

#### By Road

The marina is accessed via Hibbert Road, a turning off Albion Road (A6015) some 500 metres from its junction with the main A6 Buxton to Manchester road.

#### From the Midlands, head onto the M42.

- Stay on the M42 until you need to bear right and head for M6 toll.
- At junction T4, take the A38/A5 exit to Burton/Lichfield.
- Keep right and merge onto London Rd/A38.
- At the roundabout take the 3rd exit on the A38 slip road to M1 North/Derby/Burton.
- Continue on the A38 for 17 miles until you reach the A50 slip road, where you'll turn off.
- Continue along the A50 until you reach Sudbury roundabout where you'll take the 2nd exit onto the Doveridge bypass/A50
- Take the A515 exit towards Ashbourne. Once you reach the roundabout, take the 4th exit and at the next, take the 1st exit to stay on the A515. Stay on the A515 for 19.4 miles
- You'll then come to a point where you can turn off onto Dukes Drive (you'll see a brown camping/caravan sign on post)
- Take the 2nd exit on the next 3 roundabouts following the A6.
- You'll eventually arrive at traffic light with a sharp U-Turn onto Albion Road. Following this for 0.2 miles and the marina is the second turning on the right (Hibbert Street).

#### Airports

The closest airport to New Mills is Manchester Airport. You can get a train from Manchester Airport rail station and head to New Mill Newtown station, which is very close to the marina.

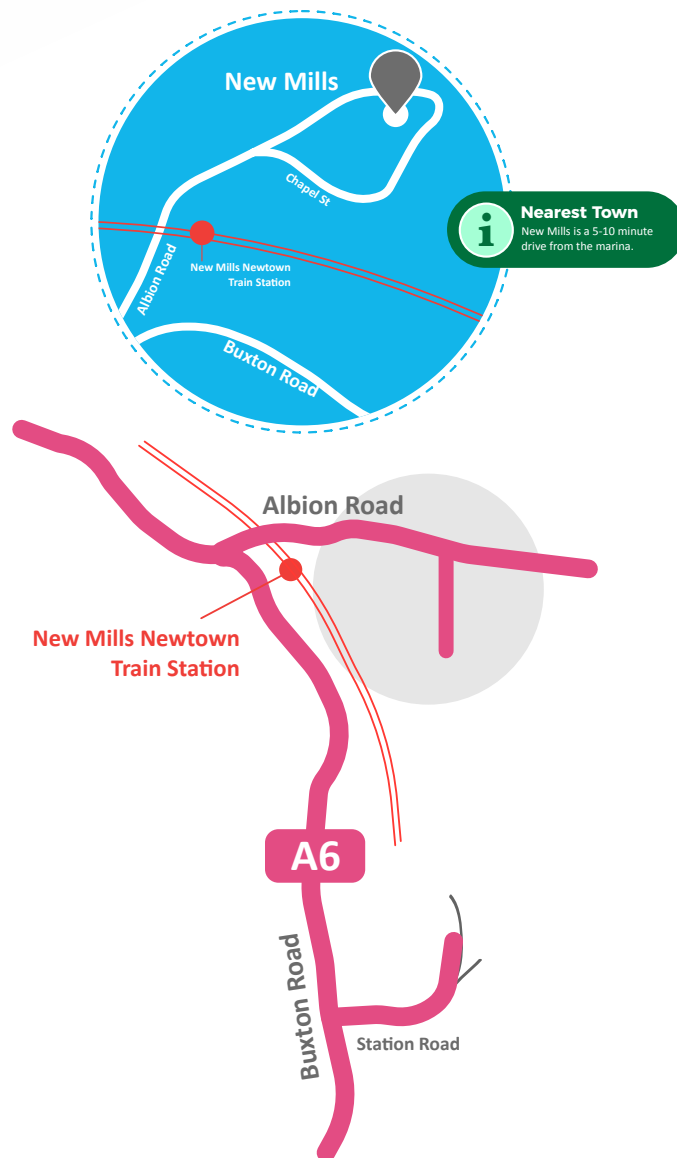
#### By Rail

The nearest rail station is New Mills Newtown where we are just a short distance away. Exit the train station onto Albion Road, then take the 2nd right turn onto Hibbert Street to arrive at New Mills marina.



You can buy rail tickets online at [thetrainline.com](http://thetrainline.com) or [gwr.com](http://gwr.com)

What 3 Words [///trickster.pinks.cities](http://trickster.pinks.cities)



### TRAVEL & PLANNING

#### LOCAL TAXI COMPANIES

Grabb A Cab: 01663 740880

Als Cabs: 07754 545406

#### NEAREST GROCERY STORES

Half a mile away on Church Road is a Co-Op food store (SK22 4NG). A little further away on Buxton road is a Tesco Super Store (SK23 7PB).

#### FOR MORE INFORMATION ON WHATS NEARBY...

Visit our website - [newmillsmarina.com/nearby](http://newmillsmarina.com/nearby)

# The Bike Shed at New Mills

The Bike Shed is situated at New Mills Marina and sleeps up to 10 people. It is on the Peak Forest Canal situated in New Mills, a traditional market town of some 10,000 inhabitants in the High Peak District of Derbyshire.

## Quick Info



- 4 Bedrooms
- Full kitchen facilities
- Bathroom with shower
- TV with Freeview
- Heating throughout
- Free Wi-Fi available
- Pets allowed

The Bikeshed is situated on the Upper Peak Forest Canal at New Mills Marina in the foothills of the High Peak District. The property has been recently and lovingly restored maintaining its rich history and period features. The Bikeshed sleeps 10 in 4 bedrooms, a double en-suite bedroom, a further double bedroom a 4 bunk en-suite bedroom and a 2 bunk en-suite bedroom.

The property comprises a large reception area with a large bathroom shower room. The main living room and lounge has a large dining and seating area, a fully fitted and fully equipped kitchen and breakfast bar. There is a large balcony with seating that provides excellent views across the Upper Peak Forest Canal, Kinder Scout and surrounding hills.

The property is centrally heated and has a multi fuel stove for those colder evenings. A small supply of logs, kindling and coal is included within the price of the let. Further supplies can be purchased from the marina. There is a BBQ and seating area located directly outside the door in a beautiful sunny aspect, grassed area.

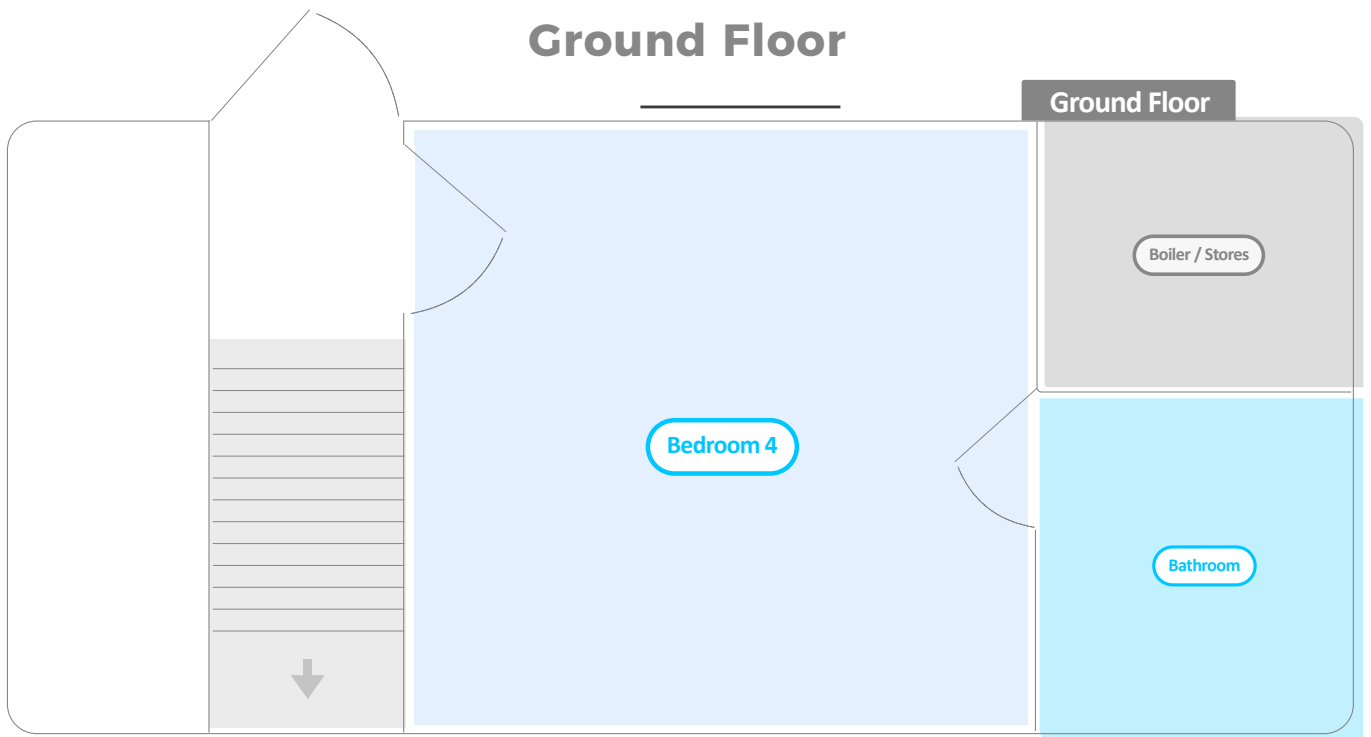
**There is no smoking inside the property.**

**Call Us: 0330 333 0590 - Go Online: [abholidaycottages.com/the-bike-shed](http://abholidaycottages.com/the-bike-shed)**



# FLOOR PLAN

## Ground Floor



## First Floor

