



# ABC HOLIDAY COTTAGES

2022 Accommodation Information

[abcholidaycottages.com](https://abcholidaycottages.com)



ABC LEISURE GROUP

# BLACKWATER MEADOW

## 2022 Accommodation Information



### Directions To The Marina

#### By Road

Blackwater Meadow Marina is situated in Ellesmere, Shropshire approximately 16 miles North West of Shrewsbury

- North and South take the M54/A5 towards Shrewsbury and then follow A528 to Ellesmere.
- On arrival in Ellesmere, follow signs for town centre.
- Turn left just after the garage and enter one-way system. The Marina is sign-posted left.
- You are now on Birch Road and the marina is situated approximately half a mile on the left

#### By Train

From London, Euston station to Shrewsbury. Then change and take train to Chester which passes through Gobowen. Leave train at Gobowen and take Taxi to Blackwater Meadow Marina (5 miles).



You can buy rail tickets online at [thetrainline.com](http://thetrainline.com) or [gwr.com](http://gwr.com)

### TRAVEL & PLANNING

#### LOCAL ACCOMMODATION

Please check [www.airbnb.co.uk](http://www.airbnb.co.uk) or [www.laterooms.com](http://www.laterooms.com) for local availability.

#### LOCAL TAXI COMPANIES

Berwyn Cars: 01691 652000

Oswestry Cabs: 01691 661663

#### NEAREST GROCERY STORES

##### Co-op Mini Super Market

Cross Street, Ellesmere, Shropshire, SY12 0AW

##### Spar Mini Super Market

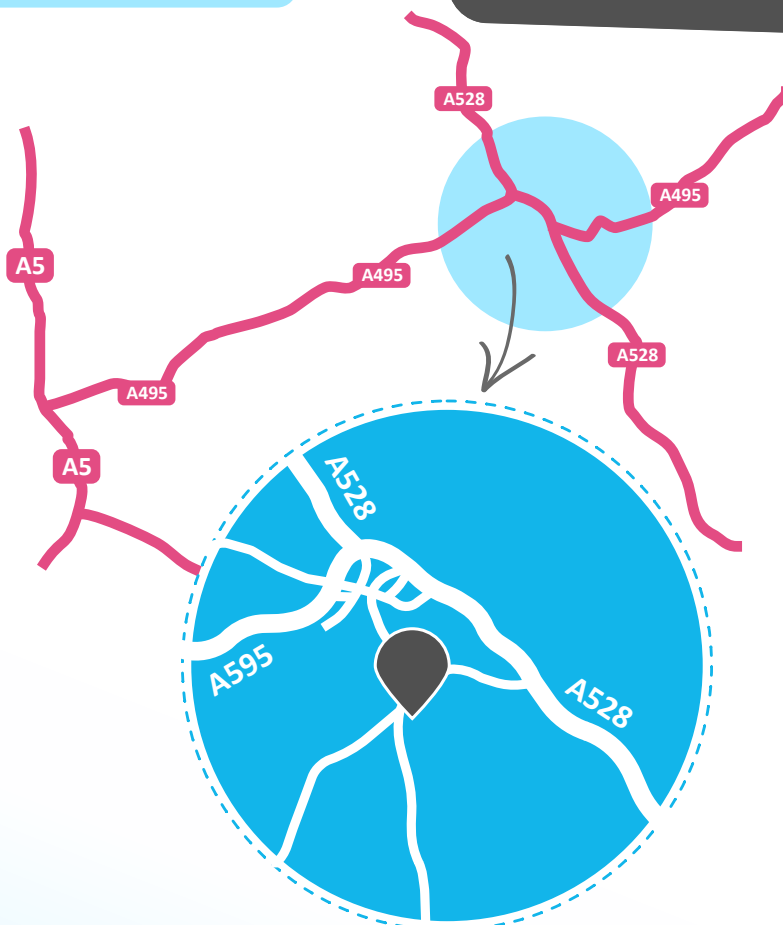
Scotland Street, Ellesmere, Shropshire, SY12 0DE

##### Tesco Superstore

Canal Way, Ellesmere, Shropshire, SY12 0EJ

#### FOR MORE INFORMATION ON WHATS NEARBY...

Visit our website - [blackwatermeadow.com/nearby](http://blackwatermeadow.com/nearby)



**ADDRESS:** Blackwater Meadow, Birch Rd, Ellesmere, Shropshire, SY12 9DD **PHONE:** 01691 624391

**E-MAIL:** [abclg@blackwatermeadow.com](mailto:abclg@blackwatermeadow.com) **WEB:** [www.blackwatermeadow.com](http://www.blackwatermeadow.com)



# Blackwater Meadow Apartment

Situated on the Llangollen Canal in Ellesmere, this 6 bed apartment gives you access to the beautiful canals of North Wales overlooking Shropshire.

## Quick Info



- 3 Bedrooms (2 people in each room)
- Full kitchen facilities
- Bathroom with shower
- TV with Freeview
- Heating throughout
- Free Wi-Fi available
- Pets allowed

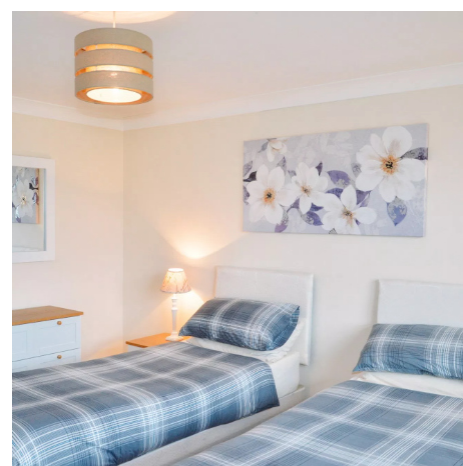
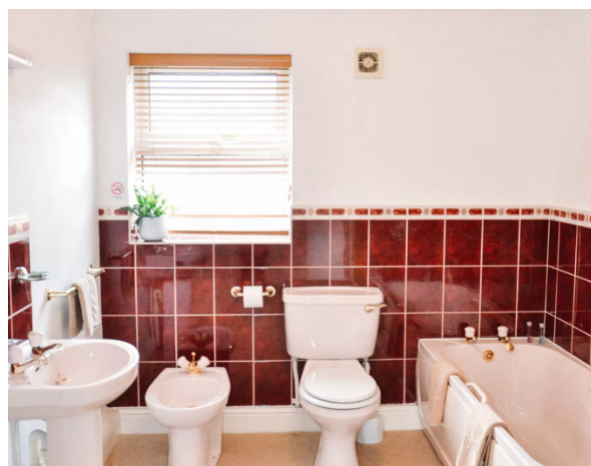
**25% off day boat hire when you book this apartment.**

A three bedroom apartment set in the beautiful Shropshire countryside on the outskirts of the county town of Ellesmere. It is located within Blackwater Meadow Marina and has direct access to the Llangollen canal tow path. It is within walking distance of four beautiful and tranquil meres and a number of other attractions.

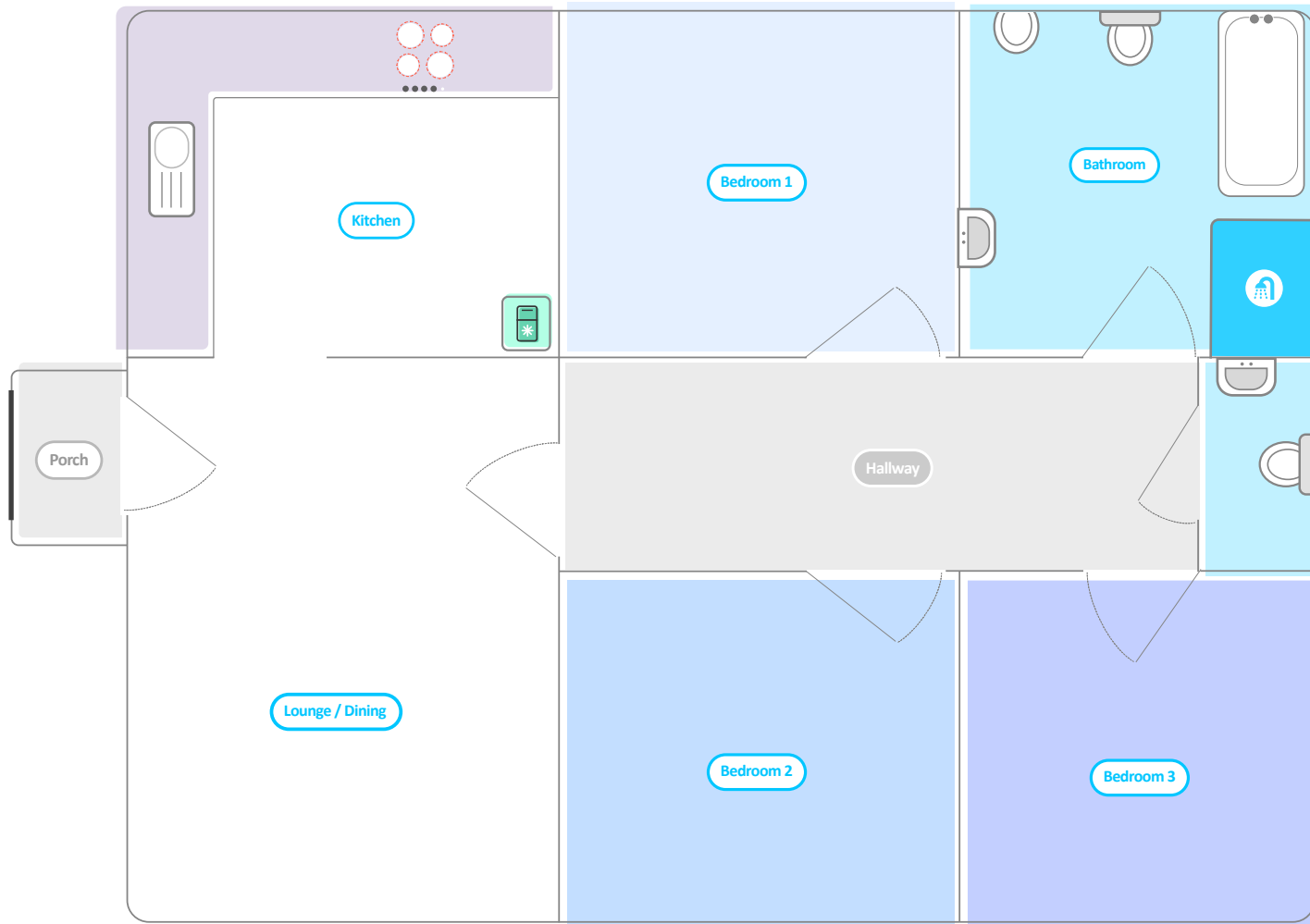
The apartment consists of a lounge/dinner, fully equipped kitchen, 3 double bedrooms that can have either a double bed or two single beds, bathroom with bath and shower and 2nd w/c. Central heating in all rooms. TV / DVD player and a music centre in lounge. There is also a separate private patio with barbecue and seating.

Pets are welcome at Blackwater however they must remain in the lounge area (charges apply, max 2 pets) and parking is available in the onsite car park. **No smoking in this property.**

**Call Us: 01691 624391 - Go Online:**  
**[blackwatermeadowapartment.com](http://blackwatermeadowapartment.com)**



# FLOOR PLAN



# AQUEDUCT COTTAGE

## 2022 Accommodation Information



ABC BOAT HIRE

### Directions To The Marina

#### By Road

**From the Midlands and North, travel to Abergavenny on the A40.**

- At the roundabout approaching Abergavenny take the first (sharp) left exit from the roundabout onto the A4042, signposted to Pontypool and Newport. Follow this road for about 3 miles through the village of Llanellen to the village of Llanover.
- The road falls through the village and just past the lowest point take the right turn signposted Pencroesoped (the sign is quite hard to see).
- You will find the turning into Goytre Wharf after approximately one mile, signposted on the left.

**From the south and west leave the M4 at junction 25a westbound or 26 eastbound, onto the A4042 signposted to Cwmbran and Abergavenny.**

- Follow the signs for Abergavenny past the access roundabouts for Cwmbran, Pontypool and New Inn.
- Turn left at the second roundabout after 'McDonalds' signposted to Mamhilad.
- Follow this country road for almost three miles when Goytre Wharf will be found on your right.

After turning into Goytre Wharf follow the road to the clearing in the wood, before reaching the aqueduct you will see the marina above the old kiln works just after the Canal & River Trust notice board. Turn right up the short hill into the marina car park.

#### Airports

**From London airports:** Make your way via the London Underground, bus or taxi to London Paddington station. From there follow the rail directions above. **From Bristol** either take a taxi directly (1hr 15min) or travel by rail to either station mentioned above. From Birmingham International take the train to Birmingham New Street Station then follow the train directions below.

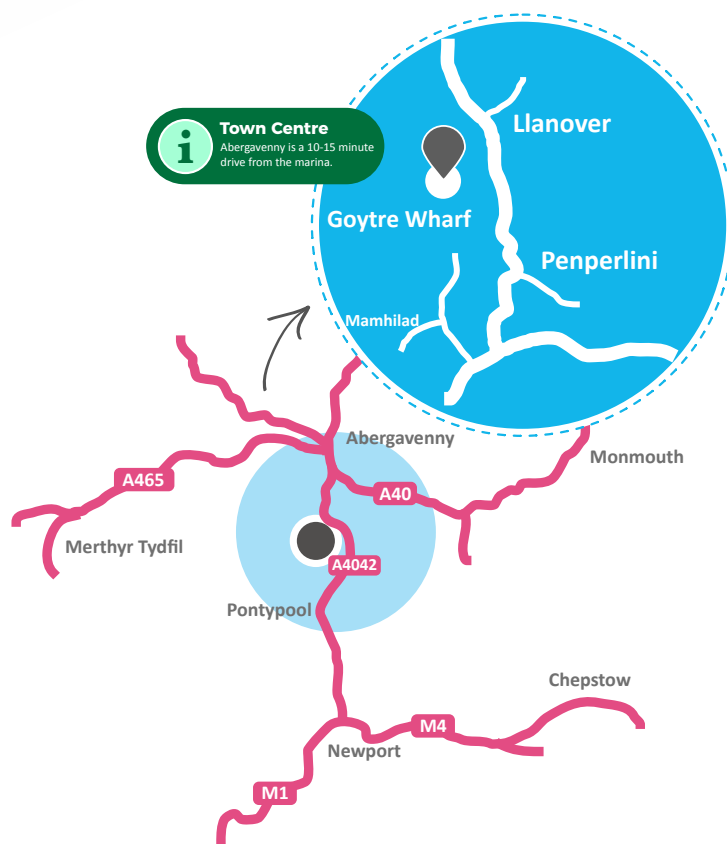
#### By Train

**The nearest rail stations are Abergavenny or Pontypool** where we are just a short taxi ride away (please contact the taxi companies directly for an estimated fare).

If travelling from the North or Midlands you will need to change at Hereford or if travelling from the South or London (London Paddington) you will need to change at Newport.



You can buy rail tickets online at [thetrainline.com](http://thetrainline.com) or [gwr.com](http://gwr.com)



### TRAVEL & PLANNING

#### LOCAL ACCOMMODATION

Please check [www.airbnb.co.uk](http://www.airbnb.co.uk) or [www.laterooms.com](http://www.laterooms.com) for local availability.

#### LOCAL TAXI COMPANIES

**Abergavenny Taxis:** 01873 854140

**Station Cabs:** 01873 857233

**Central:** 01873 850197

#### NEAREST GROCERY STORES

The marina store sells ice creams, sweets, cans, gifts and chandlery. 2 miles away in the village of Goytre is a Spar shop which sells basic groceries. The town of Abergavenny has a **Waitrose** and a **Tesco Metro** as well as an **Aldi**, and Pontypool has a **Tesco**, (0845 6779119, [www.tesco.com](http://www.tesco.com)).

#### FOR MORE INFORMATION ON WHATS NEARBY...

Visit our website - [redlineboats.co.uk/nearby](http://redlineboats.co.uk/nearby)

**ADDRESS:** Goytre Wharf, Llanover, Abergavenny, Monmouth, NP7 9EW **PHONE:** 01873 880516

**E-MAIL:** [abclg@goytrewharf.com](mailto:abclg@goytrewharf.com) **WEB:** [www.redlineboats.co.uk](http://www.redlineboats.co.uk)



# Aqueduct Cottage, Goytre Wharf

Situated on the Monmouthshire & Brecon Canal in rural South Wales this holiday home gives you a base to explore the surrounding countryside and attractions.

## Quick Info



- 2 Bedrooms (2 singles in each room)
- Full kitchen facilities
- Bathroom with shower
- TV with Freeview
- Heating throughout
- Free Wi-Fi available
- Pets allowed



**25% off day boat hire when you book this cottage.**

Downstairs accommodation consists of a lounge / diner, fully equipped kitchen, and bathroom with shower. Upstairs has two bedrooms with twin beds (Please note that the stairs are steeper than usual). In the lounge there is a Freeview TV / DVD player and a music system.

All rooms are heated by individually controlled electric convector heaters and there is a traditional style electric flame effect stove in lounge fireplace.

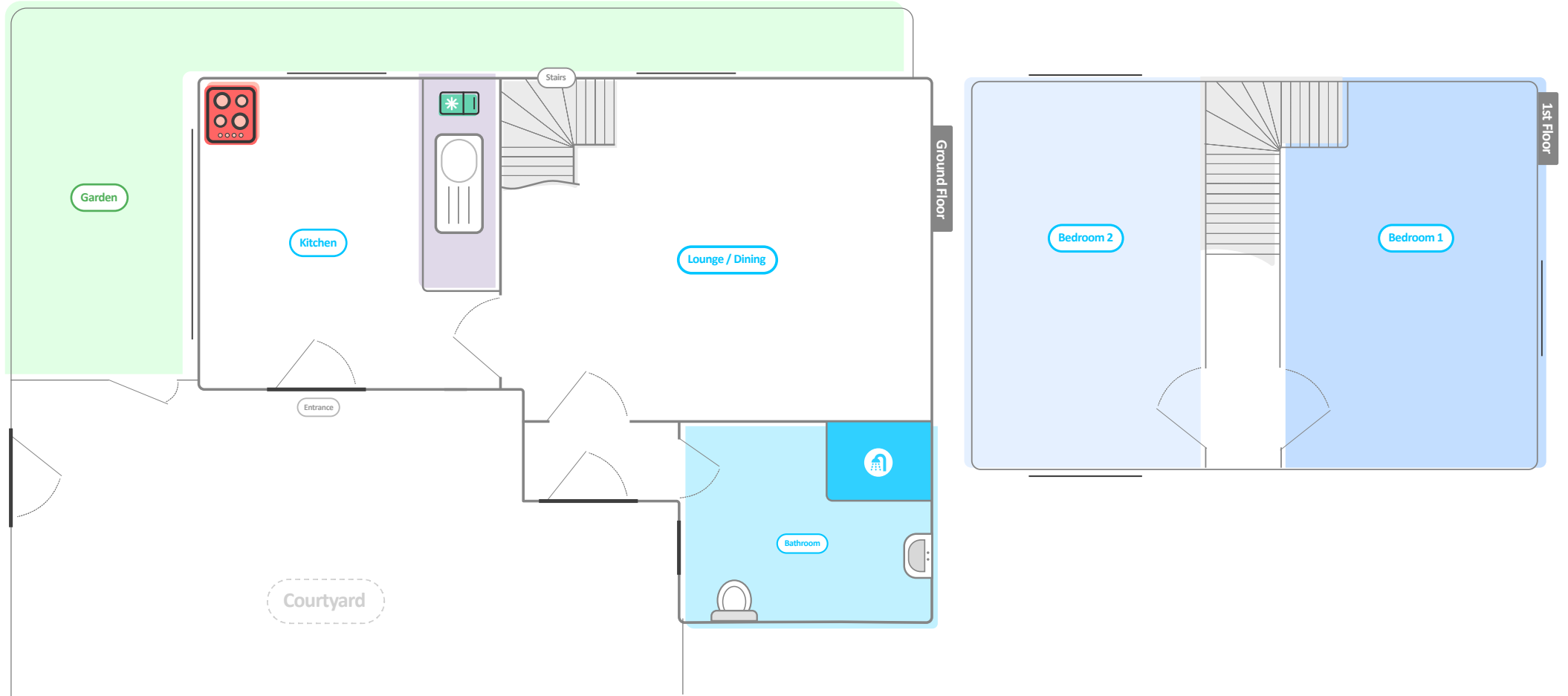
There is parking for one car right next to the cottage and additional cars can be accommodated in car parks on site at £1 per day or at Redline Boats at £3.50 per day.

Pets are welcome but must be kept on the ground floor only. (Charges apply). **No smoking in this property.**

**Call Us: 01873 880 516 - Go Online: [aqueductcottage.co.uk](http://aqueductcottage.co.uk)**



# FLOOR PLAN



# WRENBURY MILL APARTMENTS



ABC BOAT HIRE

## 2022 Accommodation Information

### Directions To The Marina

#### By Road

- Leave M6 Motorway at junction 16. Follow signs to Crewe / Nantwich.
- At the first roundabout straight on signed Nantwich / Chester.
- Carry straight on through 3 more roundabouts. After the third you will come to some traffic lights turn left A525.
- Straight through the next set off lights.
- Turn right at the next set signed Whitchurch A525.
- Take the second turning on your left signed Whitchurch. You go past a lake on your right hand side.
- About another 3 miles you will enter the small village of Aston. TURN RIGHT to Wrenbury.
- Follow signs. 2 Miles you will come to the end of the road facing you is a school.
- Turn left keep going 3/4 mile you will come to a lift bridge go over the bridge the Marina is on the right

#### By Rail & Airports

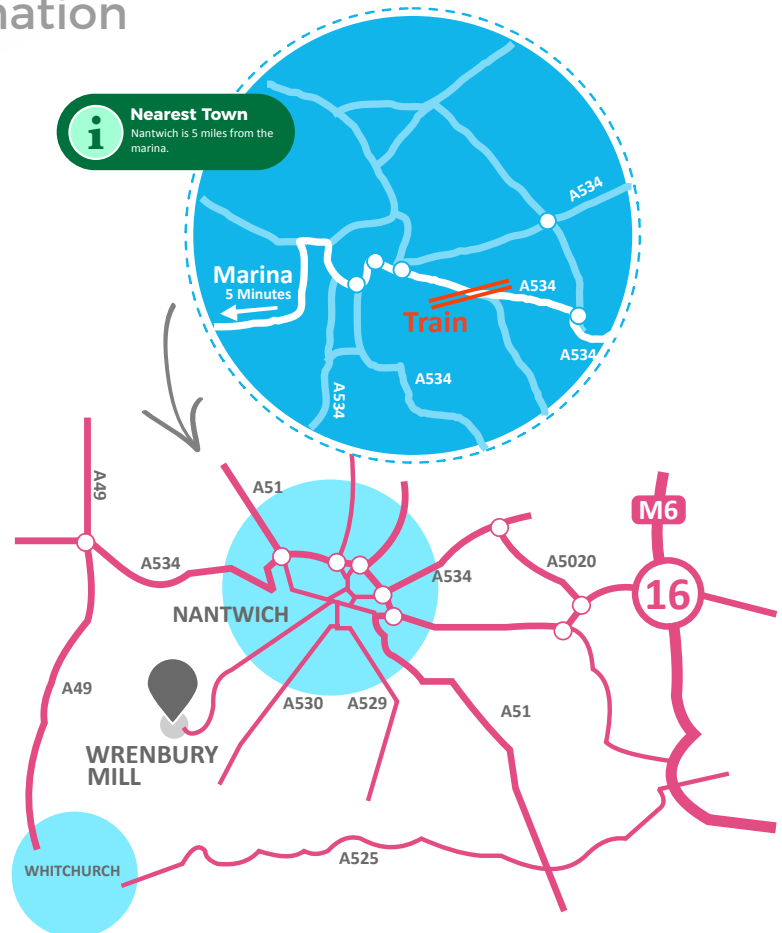
**From the London Airports:** Make your way either by the London Underground airport shuttle bus or taxi to Euston Main Line rail terminal in central London

Board the Inter-City Express to Crewe (trains depart frequently for the North West, journey time is approximately 2 hours), then travel by taxi to Wrenbury. **From Manchester International Airport:** Take the airport bus to Manchester Piccadilly station which leaves every half an hour.

At the station board a train for Crewe. At Crewe take a taxi from outside the station to Wrenbury marina (see address below). Please contact the taxi company for an estimate.



You can buy rail tickets online at  
[thetrainline.com](http://thetrainline.com) or [gwr.com](http://gwr.com)



### TRAVEL & PLANNING

#### LOCAL ACCOMMODATION

Please check [www.airbnb.co.uk](http://www.airbnb.co.uk) or [www.laterooms.com](http://www.laterooms.com) for local availability.

#### LOCAL TAXI COMPANIES

Houghton's Taxis 01270 624 574

#### NEAREST GROCERY STORES

There is a local shop to Wrenbury, but the closest larger supermarkets are **Morrisons** (01270 627426) and **Sainsburys** (01270 629664) in Nantwich.

#### FOR MORE INFORMATION ON WHATS NEARBY...

Visit our website - [wrenburymill.com/nearby](http://wrenburymill.com/nearby)

**ADDRESS:** Wrenbury Mill, Nr Nantwich, Cheshire, CW5 8HG **PHONE:** 01270 780544

**E-MAIL:** [abclg@wrenburymill.com](mailto:abclg@wrenburymill.com) **WEB:** [www.wrenburymill.com](http://www.wrenburymill.com)



# Wrenbury Apartments

Situated on the Llangollen Canal in North Wales, these apartments gives you a base to explore the beautiful canals and surrounding countryside.

## Quick Info



- **2 Bedrooms** (2 people in each room)
- **Full kitchen facilities**
- **Bathroom with shower**
- **TV with Freeview**
- **Heating throughout**
- **Free Wi-Fi available**
- **Pets allowed**

**25% off day boat hire when you book this apartment.**

We have two stylish 2 bedroom apartments located in the lovely Cheshire countryside. The holiday apartments are on the first floor of the Wrenbury Mill building, with beautiful views of passing boats in one direction and a traditional country pub the other.

The accommodation consists of a lounge with dining area, a modern fully equipped kitchen, 2 spacious bedrooms that can be configured as a double or 2 singles and a bathroom with shower. It is well located, with many attractions nearby including Beeston castle, Cheshire ice cream farm, Hack Green secret Nuclear Bunker and Cholmondeley Castle Gardens.

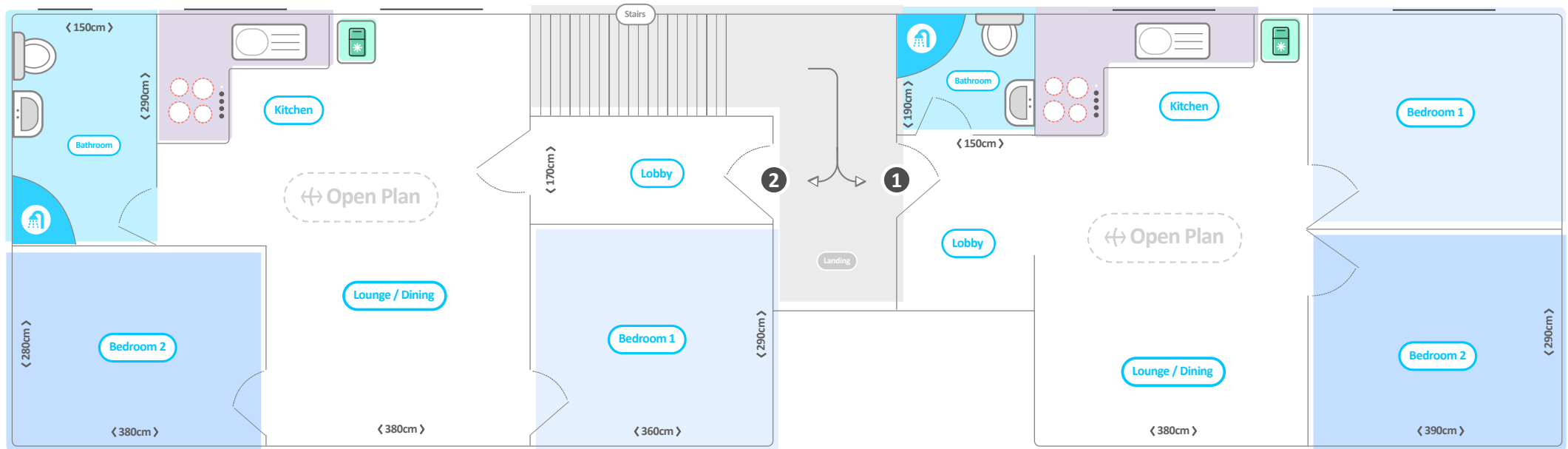
**If you book any of these apartments, you'll be entitled to 25% discount off our Day Hire at Whitchurch Marina (30 min drive away).**

**Call Us: 01270 780 544 - Go Online: [wrenburymillapartment.com](http://wrenburymillapartment.com)**



# FLOOR PLANS

Below are the floor plans for both apartment one and two.



# THE BIKE SHED

## 2022 Accommodation Information



### DIRECTIONS

#### By Road

The marina is accessed via Hibbert Road, a turning off Albion Road (A6015) some 500 metres from its junction with the main A6 Buxton to Manchester road.

#### From the Midlands, head onto the M42.

- Stay on the M42 until you need to bear right and head for M6 toll.
- At junction T4, take the A38/A5 exit to Burton/Lichfield.
- Keep right and merge onto London Rd/A38.
- At the roundabout take the 3rd exit on the A38 slip road to M1 North/Derby/Burton.
- Continue on the A38 for 17 miles until you reach the A50 slip road, where you'll turn off.
- Continue along the A50 until you reach Sudbury roundabout where you'll take the 2nd exit onto the Doveridge bypass/A50
- Take the A515 exit towards Ashbourne. Once you reach the roundabout, take the 4th exit and at the next, take the 1st exit to stay on the A515. Stay on the A515 for 19.4 miles
- You'll then come to a point where you can turn off onto Dukes Drive (you'll see a brown camping/caravan sign on post)
- Take the 2nd exit on the next 3 roundabouts following the A6.
- You'll eventually arrive at traffic light with a sharp U-Turn onto Albion Road. Following this for 0.2 miles and the marina is the second turning on the right (Hibbert Street).

#### Airports

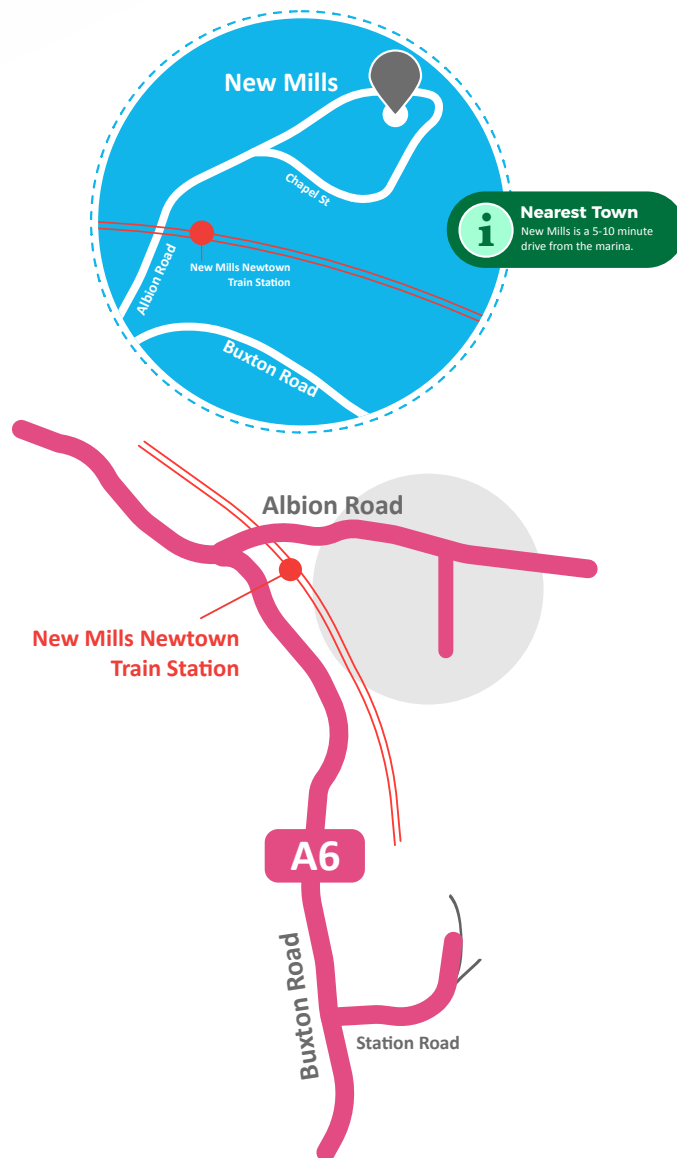
**The closest airport to New Mills is Manchester Airport.** You can get a train from Manchester Airport rail station and head to New Mill Newtown station, which is very close to the marina.

#### By Rail

**The nearest rail station is New Mills Newtown** where we are just a short distance away. Exit the train station onto Albion Road, then take the 2nd right turn onto Hibbert Street to arrive at New Mills marina.



You can buy rail tickets online at [thetrainline.com](https://www.thetrainline.com) or [gwr.com](https://www.gwr.com)



### TRAVEL & PLANNING

#### LOCAL TAXI COMPANIES

**Grabb A Cab:** 01663 740880

**Als Cabs:** 07754 545406

#### NEAREST GROCERY STORES

Half a mile away on Church Road is a Co-Op food store (SK22 4NG). A little further away on Buxton road is a Tesco Super Store (SK23 7PB).

#### FOR MORE INFORMATION ON WHATS NEARBY...

Visit our website - [newmillsmarina.com/nearby](https://www.newmillsmarina.com/nearby)

**ADDRESS:** New Mills Marina, Hibbert Street, New Mills, Derbyshire, SK22 3JJ **PHONE:** 01663 741 310

**E-MAIL:** [abclg@newmillsmarina.co.uk](mailto:abclg@newmillsmarina.co.uk) **WEB:** [www.newmillsmarina.co.uk](https://www.newmillsmarina.co.uk)



# The Bike Shed at New Mills

The Bike Shed is situated at New Mills Marina and sleeps up to 10 people. It is on the Peak Forest Canal situated in New Mills, a traditional market town of some 10,000 inhabitants in the High Peak District of Derbyshire.

## Quick Info



- 4 Bedrooms
- Full kitchen facilities
- Bathroom with shower
- TV with Freeview
- Heating throughout
- Free Wi-Fi available
- Pets allowed

The Bikeshed is situated on the Upper Peak Forest Canal at New Mills Marina in the foothills of the High Peak District. The property has been recently and lovingly restored maintaining its rich history and period features. The Bikeshed sleeps 10 in 4 bedrooms, a double en-suite bedroom, a further double bedroom a 4 bunk en-suite bedroom and a 2 bunk en-suite bedroom.

The property comprises a large reception area with a large bathroom shower room. The main living room and lounge has a large dining and seating area, a fully fitted and fully equipped kitchen and breakfast bar. There is a large balcony with seating that provides excellent views across the Upper Peak Forest Canal, Kinder Scout and surrounding hills.

The property is centrally heated and has a multi fuel stove for those colder evenings. A small supply of logs, kindling and coal is included within the price of the let. Further supplies can be purchased from the marina. There is a BBQ and seating area located directly outside the door in a beautiful sunny aspect, grassed area.

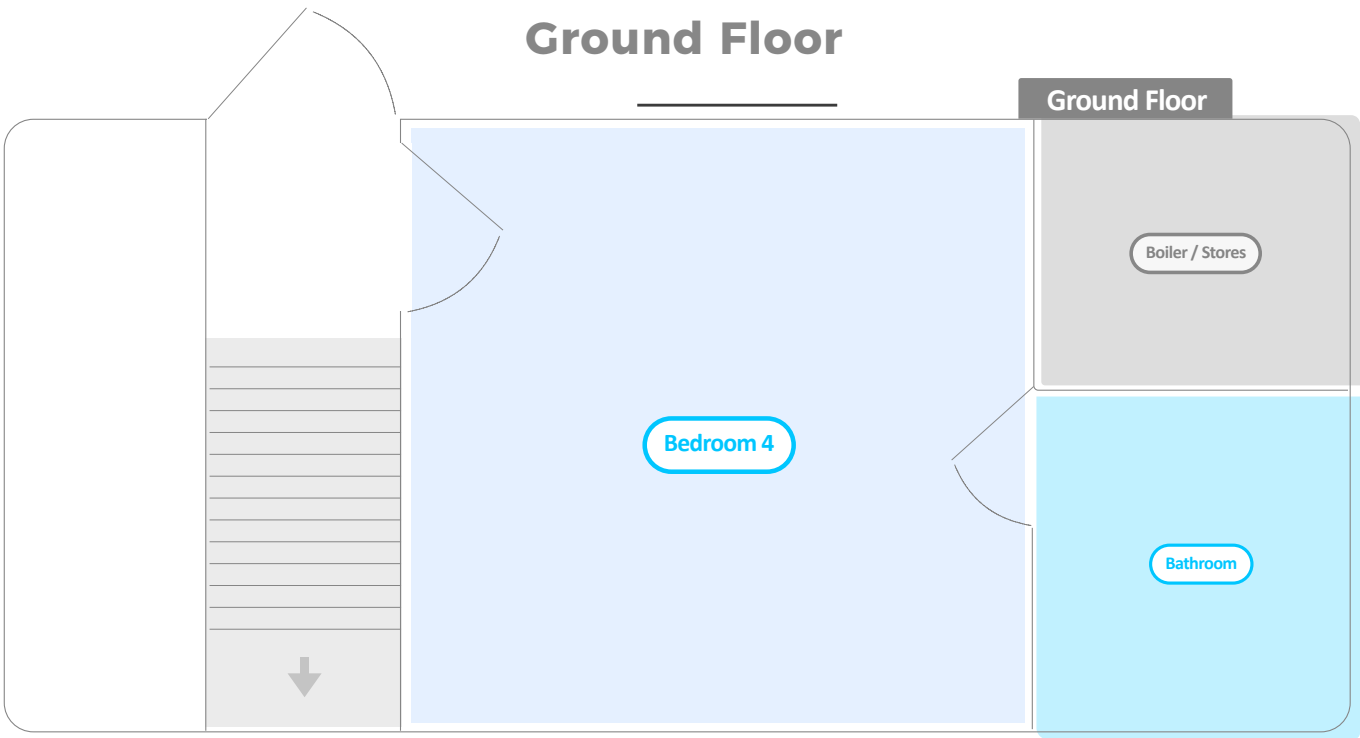
**There is no smoking inside the property.**

**Call Us: 0330 333 0590 - Go Online: [abholidaycottages.com/the-bike-shed](http://abholidaycottages.com/the-bike-shed)**

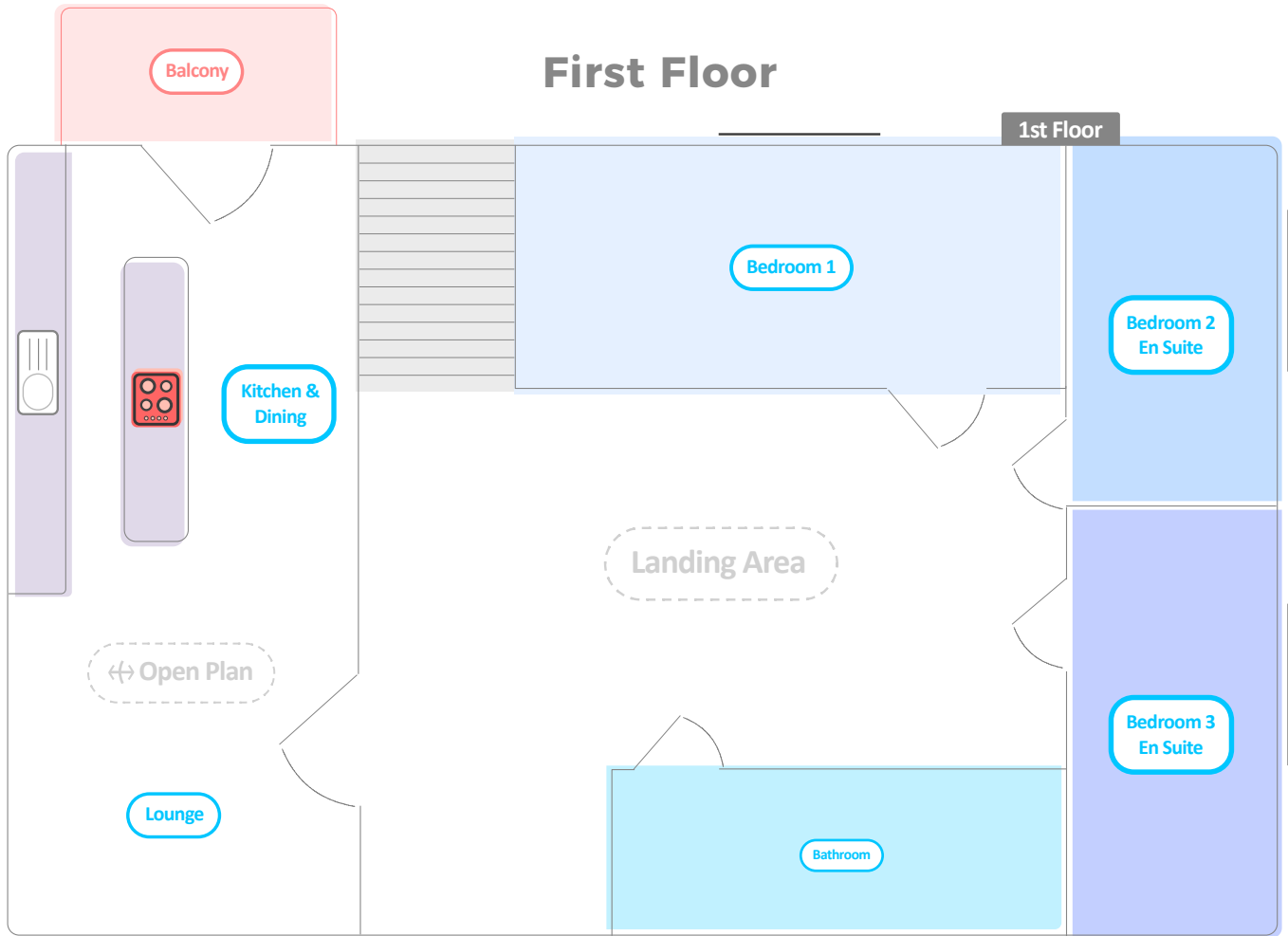


# FLOOR PLAN

Ground Floor



First Floor



# THE HAY BARN

## 2022 Accommodation Information



### DIRECTIONS

#### By Road

The marina is accessed via Hibbert Road, a turning off Albion Road (A6015) some 500 metres from its junction with the main A6 Buxton to Manchester road.

#### From the Midlands, head onto the M42.

- Stay on the M42 until you need to bear right and head for M6 toll.
- At junction T4, take the A38/A5 exit to Burton/Lichfield.
- Keep right and merge onto London Rd/A38.
- At the roundabout take the 3rd exit on the A38 slip road to M1 North/Derby/Burton.
- Continue on the A38 for 17 miles until you reach the A50 slip road, where you'll turn off.
- Continue along the A50 until you reach Sudbury roundabout where you'll take the 2nd exit onto the Doveridge bypass/A50
- Take the A515 exit towards Ashbourne. Once you reach the roundabout, take the 4th exit and at the next, take the 1st exit to stay on the A515. Stay on the A515 for 19.4 miles
- You'll then come to a point where you can turn off onto Dukes Drive (you'll see a brown camping/caravan sign on post)
- Take the 2nd exit on the next 3 roundabouts following the A6.
- You'll eventually arrive at traffic light with a sharp U-Turn onto Albion Road. Following this for 0.2 miles and the marina is the second turning on the right (Hibbert Street).

#### Airports

#### The closest airport to New Mills is Manchester

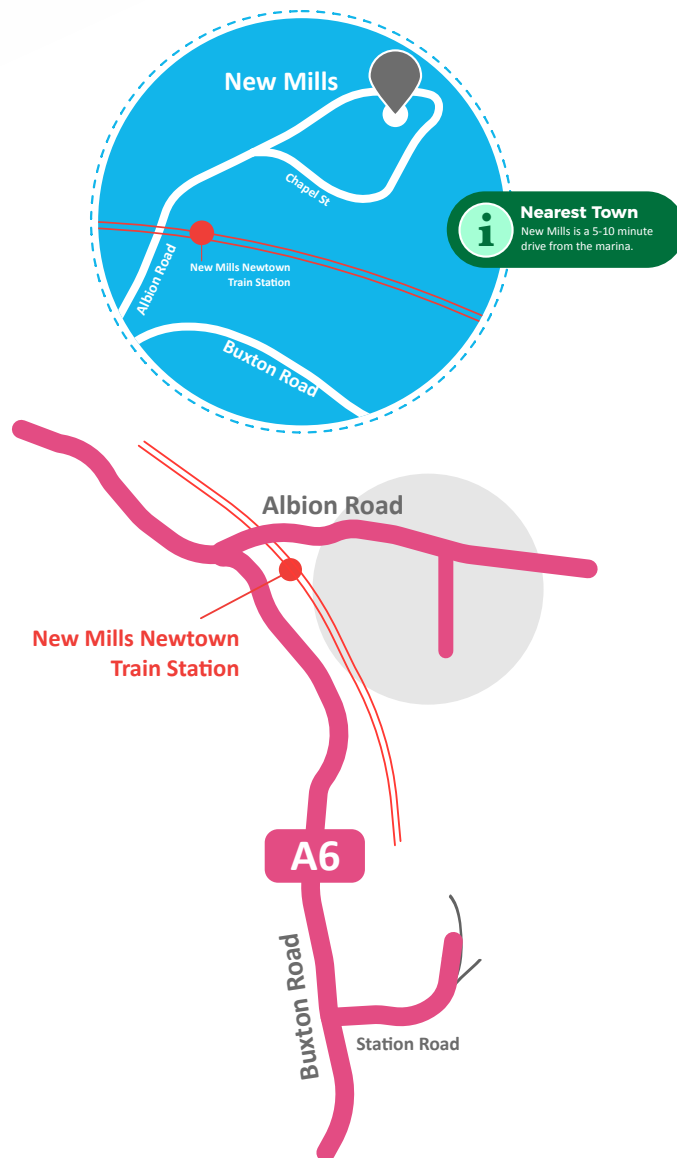
**Airport.** You can get a train from Manchester Airport rail station and head to New Mill Newtown station, which is very close to the marina.

#### By Rail

The nearest rail station is **New Mills Newtown** where we are just a short distance away. Exit the train station onto Albion Road, then take the 2nd right turn onto Hibbert Street to arrive at New Mills marina.



You can buy rail tickets online at [thetrainline.com](http://thetrainline.com) or [gwr.com](http://gwr.com)



### TRAVEL & PLANNING

#### LOCAL TAXI COMPANIES

Grabb A Cab: 01663 740880

Als Cabs: 07754 545406

#### NEAREST GROCERY STORES

Half a mile away on Church Road is a Co-Op food store (SK22 4NG). A little further away on Buxton road is a Tesco Super Store (SK23 7PB).

#### FOR MORE INFORMATION ON WHATS NEARBY...

Visit our website - [newmillsmarina.com/nearby](http://newmillsmarina.com/nearby)

**ADDRESS:** New Mills Marina, Hibbert Street, New Mills, Derbyshire, SK22 3JJ **PHONE:** 01663 741 310

**E-MAIL:** [abclg@newmillsmarina.co.uk](mailto:abclg@newmillsmarina.co.uk) **WEB:** [www.newmillsmarina.co.uk](http://www.newmillsmarina.co.uk)



# The Hay Barn at New Mills

The Haybarn at New Mills Marina that sleeps up to 4 people is on the Peak Forest Canal situated in New Mills, a traditional market town of some 10,000 inhabitants in the High Peak District of Derbyshire.

## Quick Info



- **1 Bedrooms** (+ Double sofa bed in lounge)
- **Full kitchen facilities**
- **Bathroom with shower**
- **TV with Freeview**
- **Heating throughout**
- **Free Wi-Fi available**
- **Pets allowed**

The Hay Barn is situated on the Upper Peak Forest Canal at New Mills Marina in the foothills of the High Peak District. The property has been recently and lovingly restored maintaining its rich history and period features.

The Hay Barn has a double bed in one bedroom on a mezzanine floor that provides excellent views across the Upper Peak Forest Canal, Kinder Scout and surrounding hills. The lower floor comprises of a dining and seating area, a fully fitted and fully equipped kitchen, bathroom and shower. There is a good quality leather occasional bed settee on the lower floor should four people wish to stay.

The property is centrally heated and has a multi fuel stove for those colder evenings. A small supply of logs, kindling and coal is included within the price of the let. Further supplies can be purchased from the marina. There is a BBQ and seating area located directly outside the door in a beautiful sunny aspect, grassed area. The property has television and WiFi.

**There is no smoking inside the property.**

**Call Us: 0330 333 0590 - Go Online: [abcholidaycottages.com/the-hay-barn](http://abcholidaycottages.com/the-hay-barn)**



